

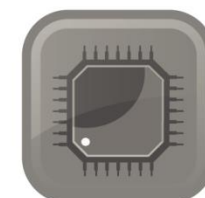


Управление конфигурациями изделия в 3DEXPERIENCE

Григорий Абаев
Инженер

www.beepitron.com

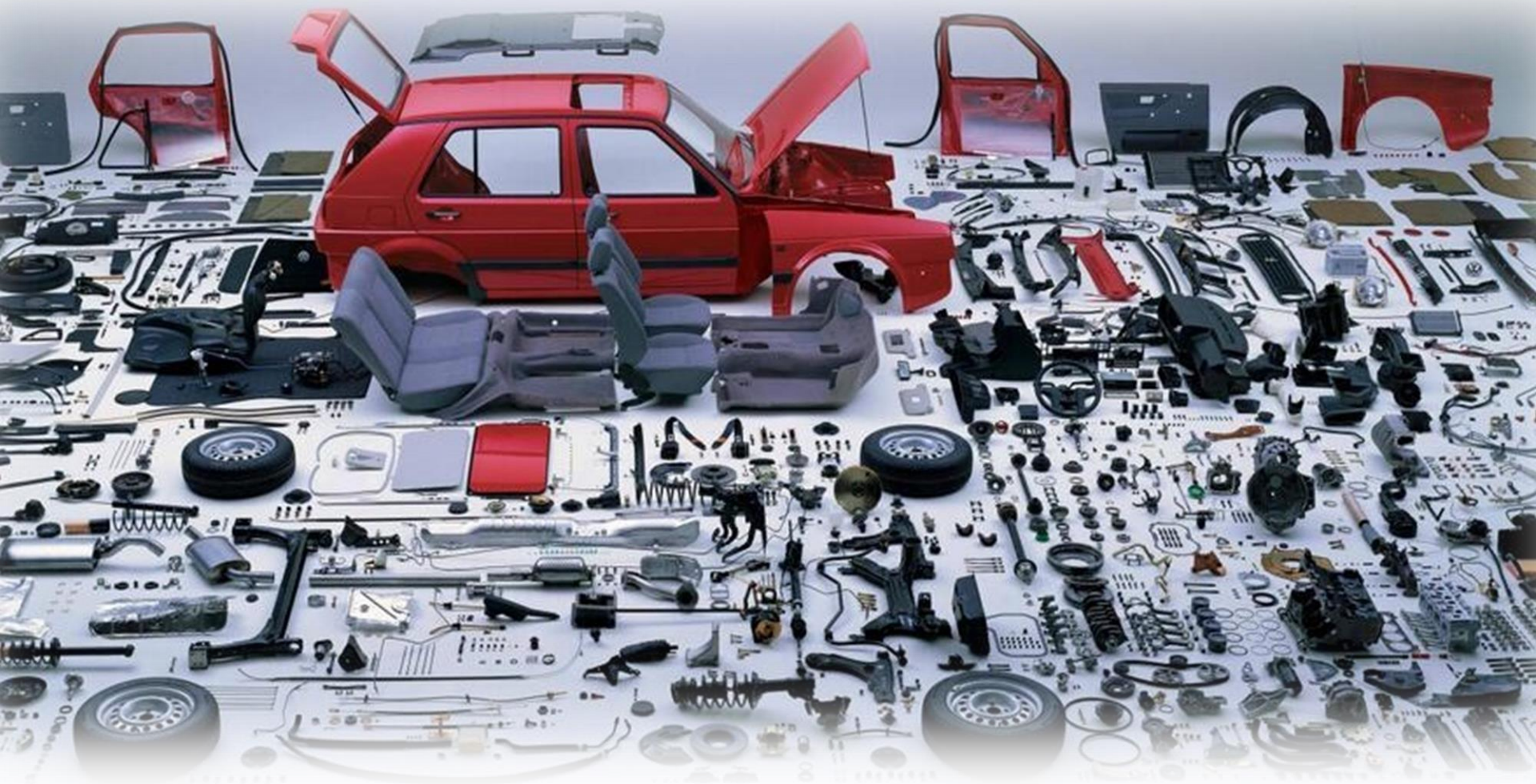
2017



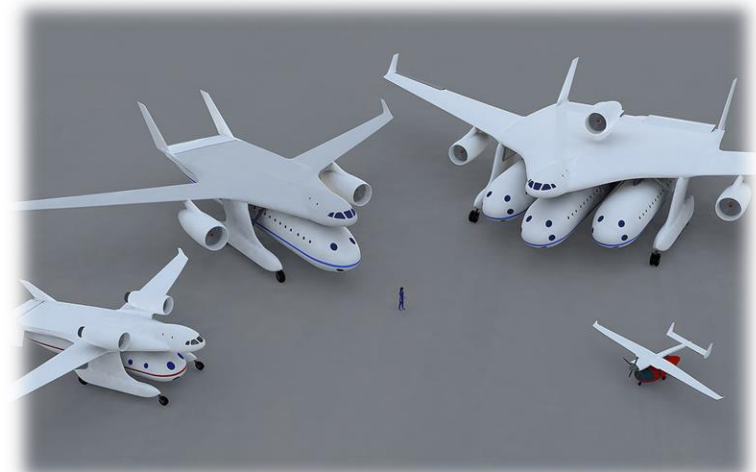
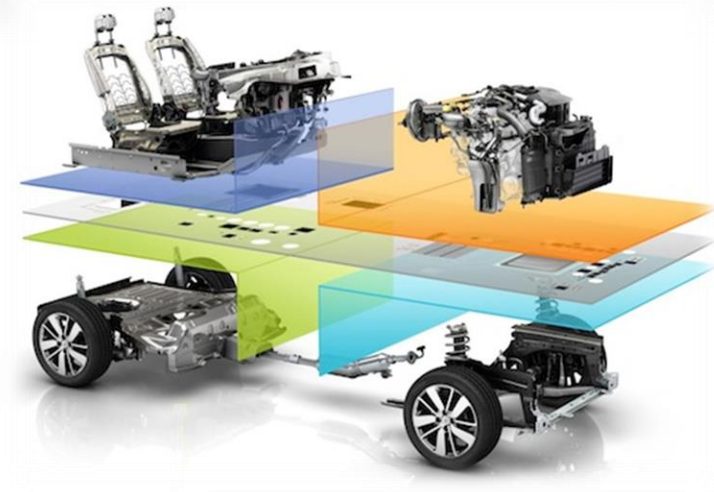
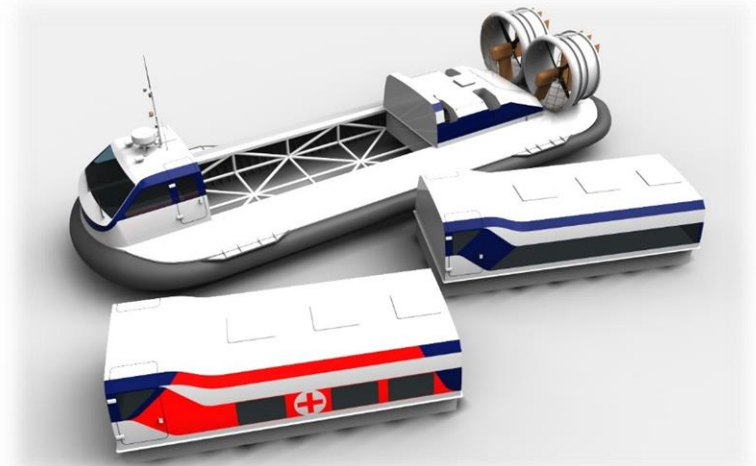
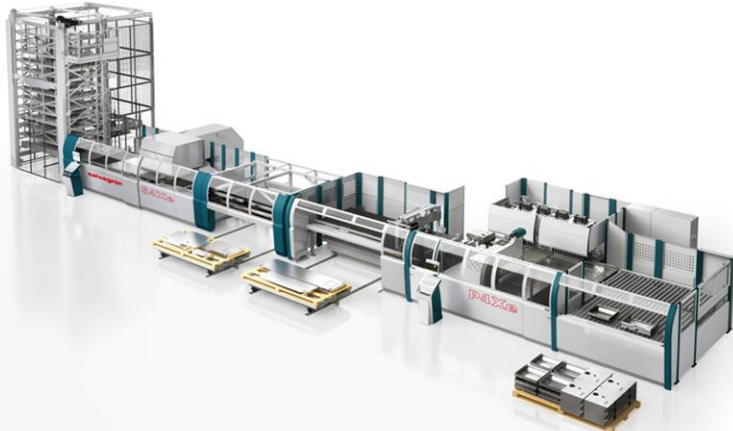
Модульное конструирование



Унификация и агрегатирование



Преимущества модульного конструирования




Новые инструменты продаж



Корпоративная платформа 3DEXPERIENCE



 Social and Collaborative apps	3D 3D Modeling apps	V+R Content and Simulation apps	i Information Intelligence apps
ENOVIA Collaborative innovation	CATIA Shape The World We Live In	SIMULIA Realistic Simulation	NETVIBES Dashboard Intelligence
3DEXCITE Marketing in the Age of Experience	SOLIDWORKS Inspiring Innovation	DELMIA Global Industrial Operations	EXALEAD Data in Business
	GEOVIA Virtual Planet	3DVIA Consumer Experience	
	BIOVIA Virtual Biosphere and Materials		

Управление структурой изделия

Product Architect - PDA

Used: 2/10

Expiration date: March 15, 2018 2:59 AM

Members

Apps

About

16 Apps are available with this role



Requireme...



Requireme...



My Models



My Engineering Parts



Engineering BOM



Collaborati... & Approvals



Variant Managem...



Change Actions Managem...



My Collections



My Changes



Collaborati... for Microsoft



Classify & Reuse



Configured BOM



My ECR ECOs



My Issues



My Route Tasks

3DEXPERIENCE | ENOVIA Engineering BOM Management

R-0000673-01 State: In Work Frozen
Part (A) Owner: Ambarish Warye
Modified: Aug 25, 2016 2:35:57 AM

EBOM EBOM Common MBOM Plant Specif... Where Used Markups >>

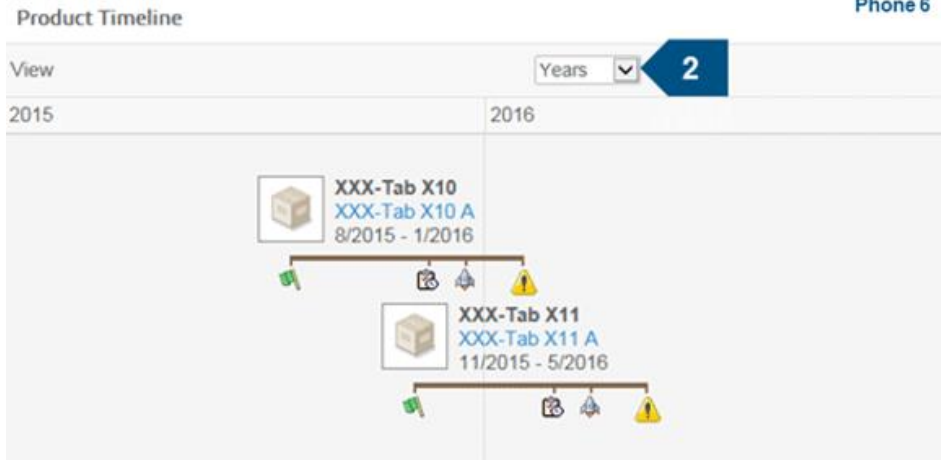
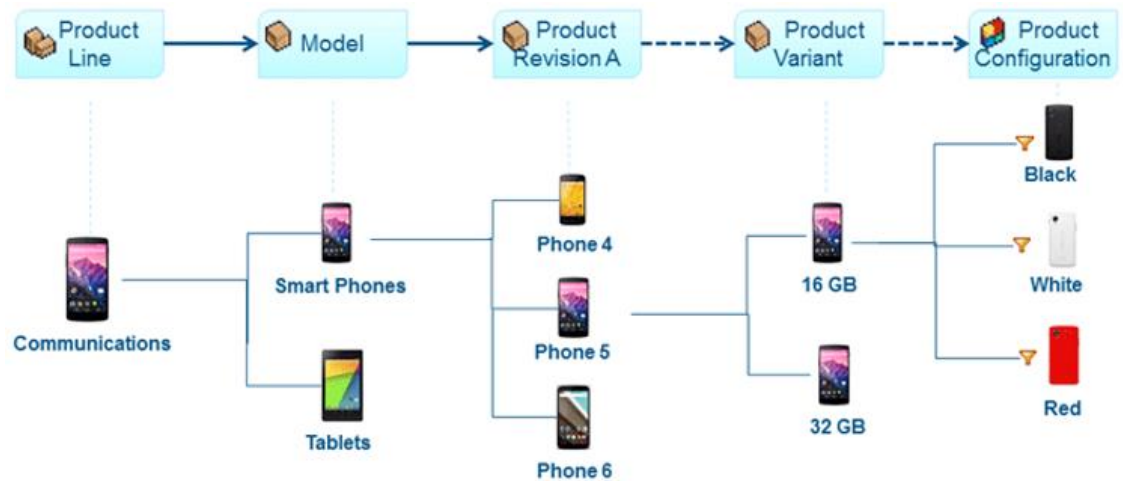
Find

6 objects, 1 selected

About 3DEXPERIENCE Platform

Портфолио продукции (управление вариантами)

- 1) Структурирование продукции
- 2) Связь моделей и их ревизий из структуры с объектами моделирования (BOM, 3D-модели)
- 3) Связь моделей с проектами



Управление конфигурациями изделий

Configuration Management - CFG

Option

Used: 2/5

Expiration date: March 15, 2018 2:59 AM

Members

Apps

About

4 Apps are available with this role



Product Structure



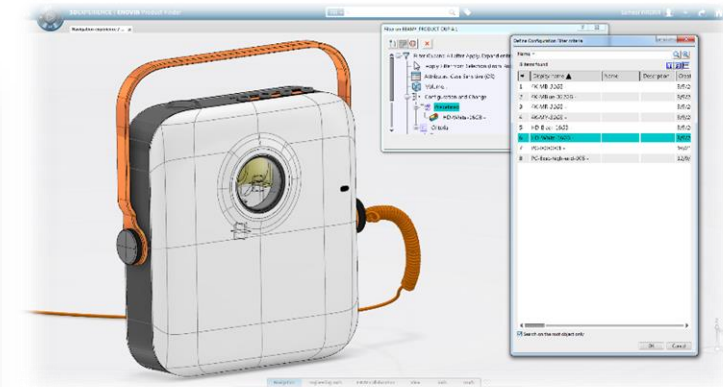
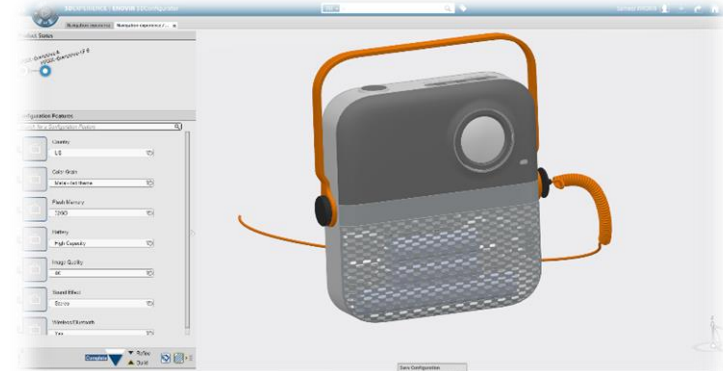
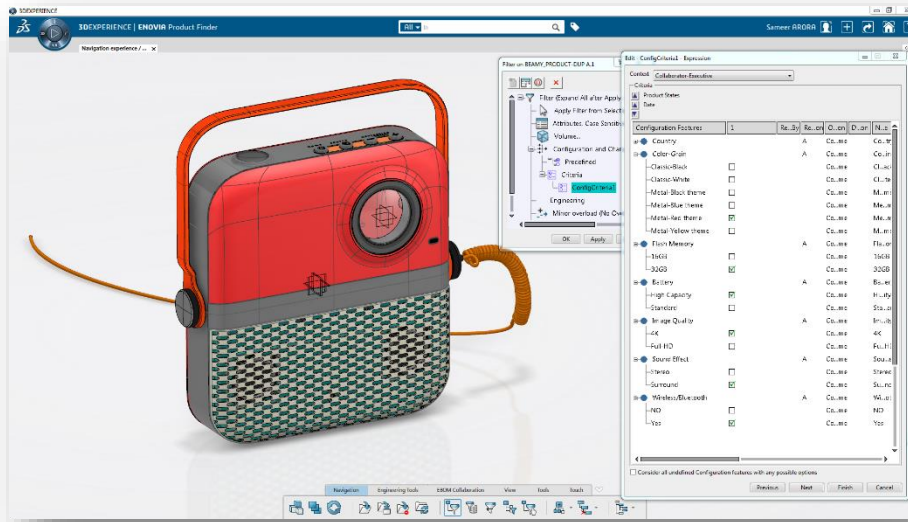
Configured BOM



Variant Analysis



3DConfigu...

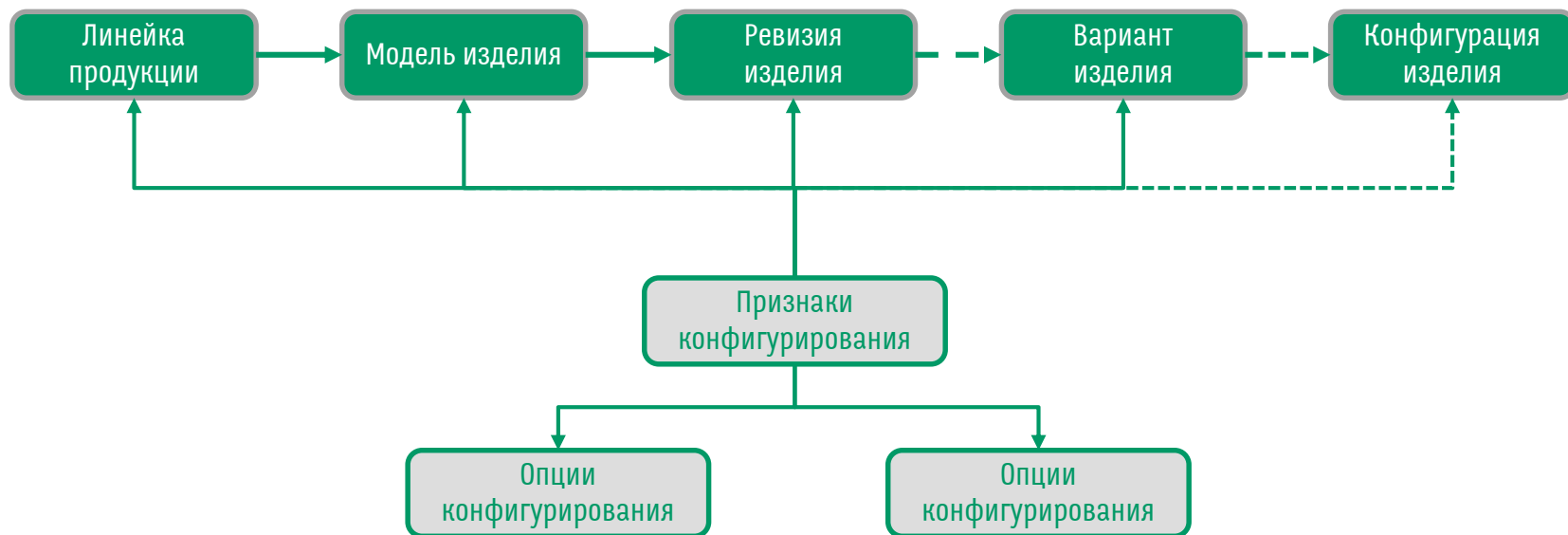


Конфигурирование моделей

- 1) Создание признаков конфигурирования структуры изделия (Configuration Features)
- 2) Создание опций конфигурирования структуры изделия
- 3) Создание логических элементов структуры изделия (Logical Features)
- 4) Создание правил конфигурирования
- 5) Создание новой конфигурации изделия:
 - на уровне BOM
 - 3d модель



Конфигурирование на различных уровнях



Как это выглядит?



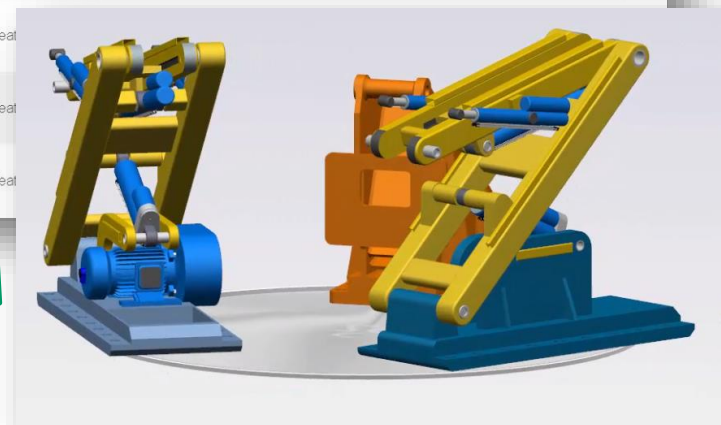
A screenshot of a software interface showing a Bill of Materials (BOM) table. The table lists various parts and their specifications:

Name	Specification Title	Type
A-0001548-01	MyCustomer_Excavator_150t	Part
A-0001549-01	MyCustomer_Internal_Equipment	Part
A-0001296-01	Electrical_Cabine	Part
A-0001555-01	MyCustomer_Motor	Part
A-0001559-01	MyCustomer_Filter	Part
A-0001550-01	MyCustomer_Cabine	Part
A-0001554-01	MyCustomer_Cabin_Fixator	Part
A-0001555-01	MyCustomer_Cabin	Part
A-0001551-01	MyCustomer_Lower_Chassis	Part
A-0000877-01	Frame	Part
A-0001558-01	MyCustomer_Frame_Mechanism	Part
A-0001557-01	MyCustomer_Moving_System	Part
A-0001553-01	MyCustomer_Front_attachment	Part

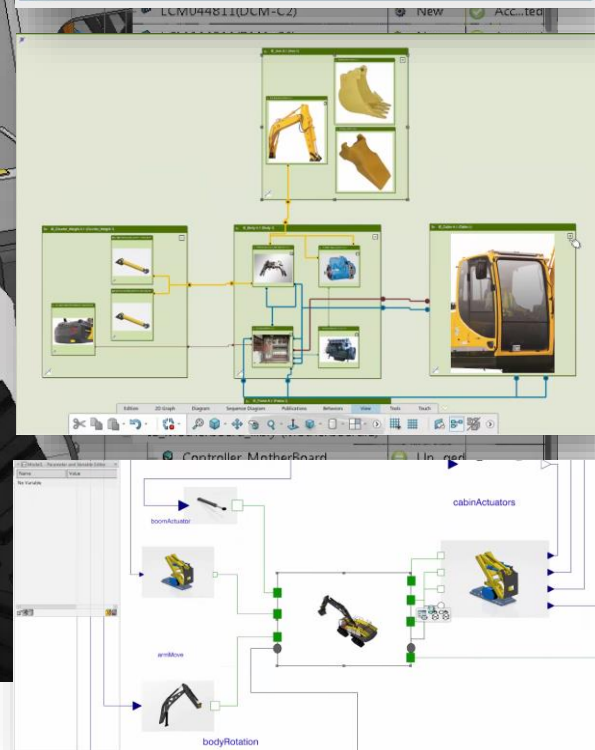
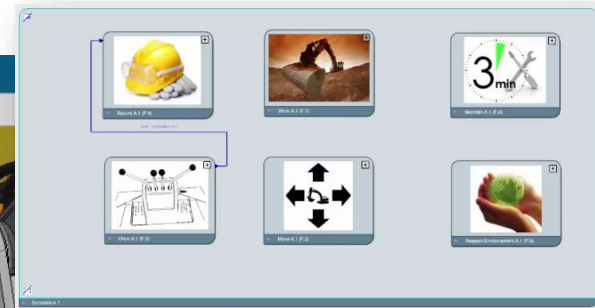
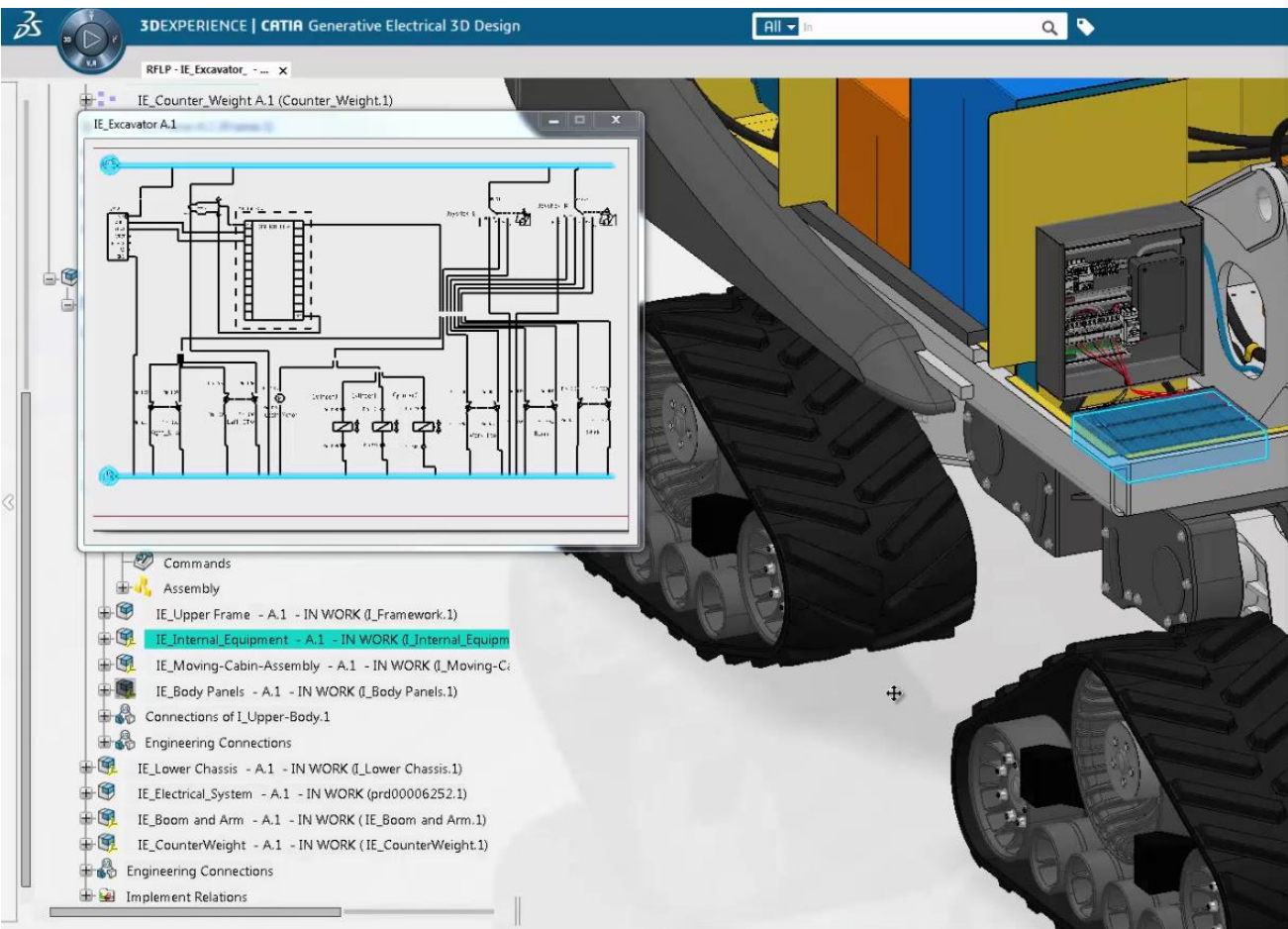


Связь структуры изделия с требованиями

Requirements				Requirements				Satisfied By:							
Requirement Name	Title	Rev	State	Common Products				Feature Name	Type	Rev	State				
Ability to work with different grounds		A	Released					Teeth Type	Configuration Feat...	A	Released				
Adjustable seat	Allow people from ...	A	Released					Cabin Seat	Configuration Feat...	A	Released				
Comfortable seat		A	Released					Cabin Seat	Configuration Feat...	A	Released				
Controls positioning		A	Released					Cabin Interior	Configuration Feat...	A	Released				
Direct visibility from the cabin ensuring regulation		B	In Work Approval					Cabin Mechanism	Configuration Feat...	B	Review				
High speed excavati...		A	Released					Bucket Volume	Configuration Feat...	A	Released				
Name				Name	Type	State	Design Variants	Standard/ Optional	Single/ Multiple	F/N	Qty				
Internal Equipments A				Internal Equipments A	Logical Feature	Release	Yes	Optional	Multiple	2	1.0				
Upper Body A				Upper Body A	Logical Feature	Release	Yes	Optional	Multiple	3	1.0				
Moving Cabin B				Moving Cabin B	Logical Feature	Preliminary	Yes	Optional	Multiple	4	1.0				
Cabin Fixation B				Cabin Fixation B	Logical Feature	Preliminary	Yes	Optional	Multiple	1	1.0				
Seat A				Seat A	Logical Feat										
Cabin A				Cabin A	Logical Feat										
Lower Chassis A				Lower Chassis A	Logical Feat										



Связь с инструментами системного инжиниринга



Связь с программами и проектами из ENOVIA Project Management

3DEXPERIENCE | ENOVIA Project Management

Grigoriy Rbaev

La Luci
Project Space (37146...)

Проект построения цифровой модели производства электромеханических

State: Assign Active Review
Owner: c00004295855
Modified: 8/9/2016 2:40:32 PM

Private Test 3DSpace

Schedule Status Business Status

Project Status

Progress	Slipped By	Late Tasks	Members	Milestones	Budget	Risk	Issue
23% On Time	0 Days	75% Critical	0 Overloaded	0% Missed	0% Consumed	0% Severe	0% Severe

Top Level Tasks

All Tasks

Complete: 22.2%
Active: 11.1%
Idle: 55.6%

Deliverables

Complete: 93.8%
Active: 6.2%

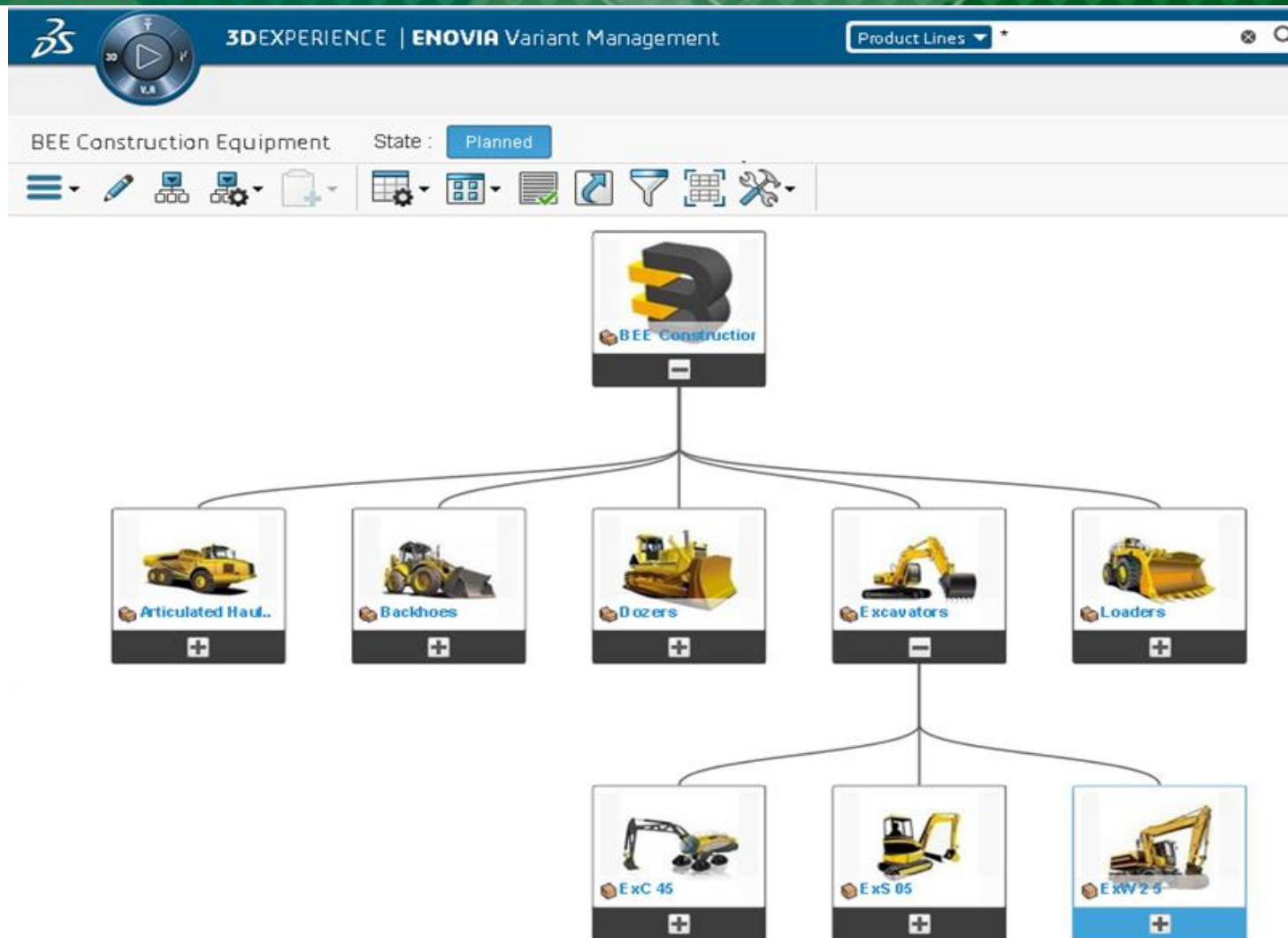
Critical Tasks

Complete: 30.8%
Active: 15.4%
Idle: 52.8%

Gantt Chart

Task Name	07/25/2016	08/01/2016	09/01/2016	10/01/2016	11/01/2016
Обсуждение целей проекта		01 Aug - 06 Aug			
Подготовительная стадия					07 Nov - 14 Nov
Принятие решения о моделир...		01 Aug - 06 Aug			
Моделирование			05 Sep - 26 Sep		
Имитационное моделированк...				10 Oct - 31 Oct	
Принятие решения об адекват...			12 Sep - 19 Sep		
Анализ результатов моделир...				03 Oct - 10 Oct	
Завершение				10 Oct - 17 Oct	

Конфигурируемый портфель выпускаемой продукции



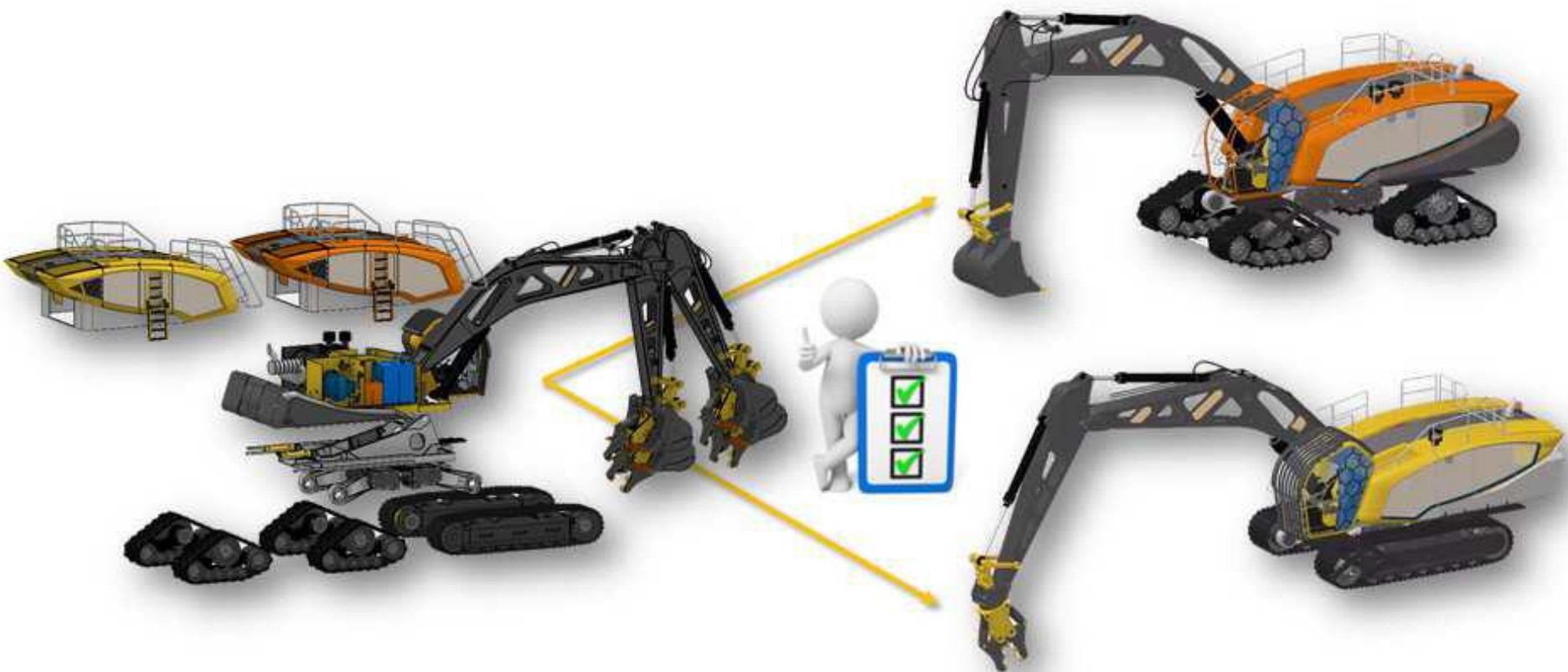
Связь с инструментами цифрового производства

The screenshot displays the 3DEXPERIENCE | DELMIA Process Planning software interface. The main window shows a 3D model of a tracked excavator assembly in a virtual factory environment. The interface includes a top navigation bar with the 3DEXPERIENCE logo, the text "3DEXPERIENCE | DELMIA Process Planning", a search bar, and user icons. A "Manufacturing System Gantt" window is open, showing a timeline from 1940s to 2100s. The Gantt chart lists various assembly components and their durations and utilization rates.

System/Operation	Start	End	Utilized
Assemble Boom Cylinder A.1 (Assemble Boom Cylinder.1)	10.00		
Position Boom B.1 (Position Boom.1)	10.00		
Assemble Boom Product B.1 (Assemble Boom Product.1)	10.00		
Station 7 FAL B.1 (Station 7 FAL)	30.00		6.66%
Assemble Boom Equipment A.1 (Assemble Boom Equipment.1)	10.00		
Assemble panels A.1 (Assemble panels.2)	10.00		
Assemble Arm Prod A.1 (Assemble Arm Prod.1.2)	10.00		

The 3D view shows a large blue tracked excavator with a yellow boom and arm. The assembly is shown in a virtual factory environment with other equipment and workers. The interface also includes a "Play" control panel with a timeline and a "3D View" window showing a detailed view of the "Assemble panels A.1" component.

Конфигуратор в демонстрационном примере



Варианты сотрудничества

- Выполнение работ на основе технического задания заказчика
- Бесплатная пробная лицензия ZDEXPERIENCE до 60 дней
 - Поддержка на этапе тестовой эксплуатации
- Обучение специалистов
 - Сертифицированные учебные курсы
- Поставка лицензий ZDEXPERIENCE



Спасибо за внимание!



Григорий Абаев

Инженер технической поддержки PLM

age@beepitron.com

[+7\(812\) 740-18-00 \(доб.184\)](tel:+7(812)740-18-00)